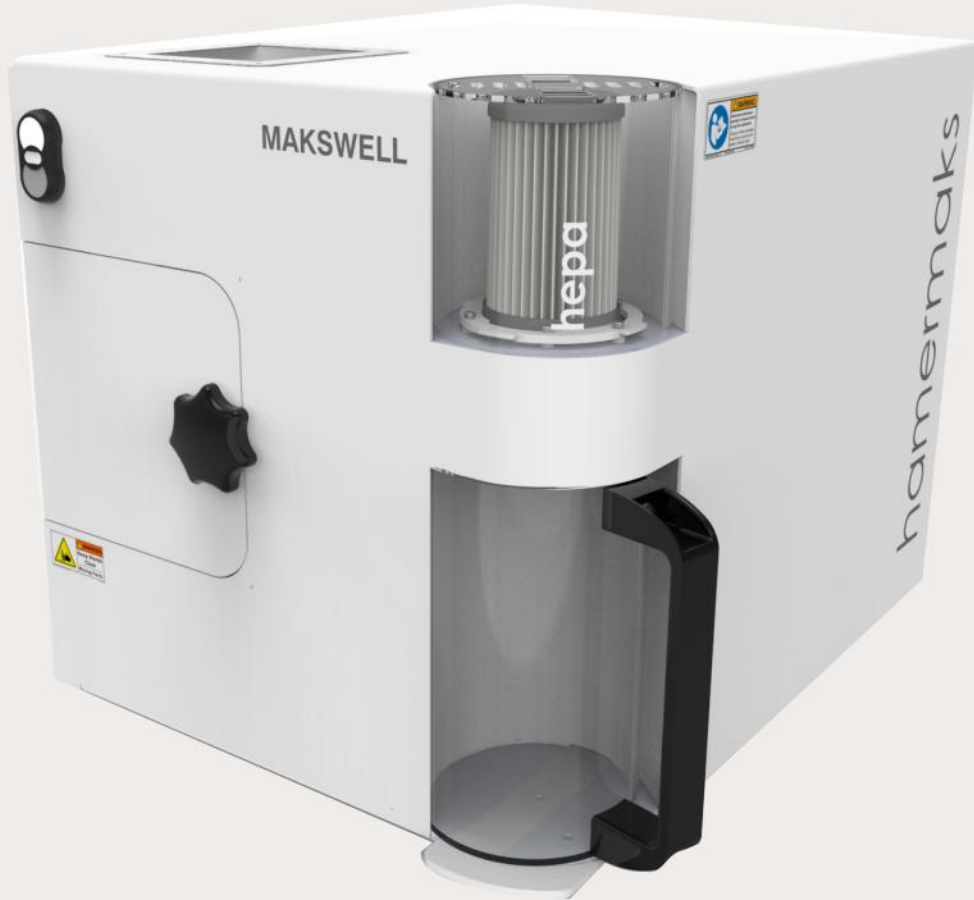


MAKSWELL
innovation

Hamermaks

Laboratory Hammer Mill



ISO
9001:2008
REGISTERED

CE

TSE

Made in
Türkiye

GUARANTEE
2
YEARS

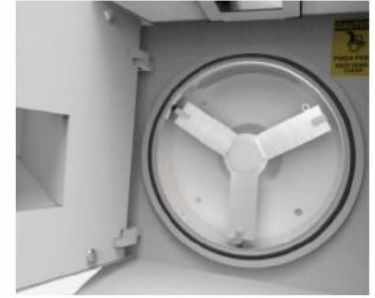
Hammer Mill Method

Precision and versatility in a laboratory hammer mill that can process small product quantities with minimal product losses, while offering a range of sieve options to minimize powder fines. Design of the mill lends itself well to processing a wide variety of grains such as wheat, barley, Maize, Rice, Oats, Rye and Buckwheat and other materials of medium hardness. The crushing process is achieved by the use of a set of hammers in a crushing chamber which beats the mineral feeds into smaller particles small enough to pass through the aperture of the replaceable sieve positioned beneath the crushing chamber. End products of hamermaks are used for applications such as enzym meter and gluten analysis. It can grind up to 300 gram samples which is enough for analysis.

Hamermaks

Hardware

- Hardened steel chamber and crusher rotor
- Door lock and sensor for user safety
- Hepafilter system for user health
- Inverter motor technology
- 16800 rpm motor speed
- 0.8 mm standard sieve diameter
- optionally different diameter sizes of sieves for different grains

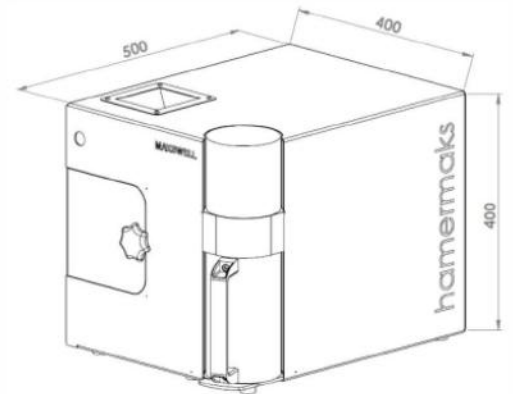


Standard Accessories



Technical Specifications

Voltaj: 220 V, 50 Hz
Güç: 3500 W
Ağırlık: 45 kg
Net Ölçüler (mm): 500x400x415



MAKSWELL
innovation

İvedik O.S.B 1354 cad 1435
sokak No:3 Ankara Turkey

☎ 0090 312 395 67 37

✉ info@makswell.com.tr

🌐 www.makswell.com.tr