

Grain Sampler Modifications



Single Suction probe

Single suction probe made of stainless steel. Lengths: 2000 mm / 2500 mm / 3000 mm



Double Suction probe

Double suction sampling probe nested concentric tubes are made stainless steel tubes. Lengths: 2000 mm / 2500 mm / 3000 mm



Split Probe

Made of stainless steel with 10 eyes on the split probe. Lengths: 2000 mm / 2500 mm / 3000 mm



Imaging System

More effective and safe sampling process with dual camera and monitor



Joystick

Both automatic and manual sampling with compact remote control



wireless control unit

Ability to operate from a distance of one hundred meters with the wireless control unit



Turbine, 1.1 kW

Turbine (380V) used for 0-10 meters distance



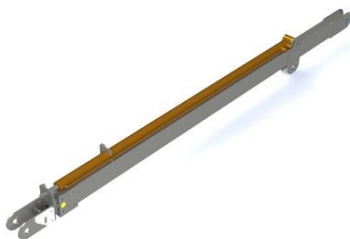
Turbine, 3 kW

Turbine (380V) used for 10-25 meters distance



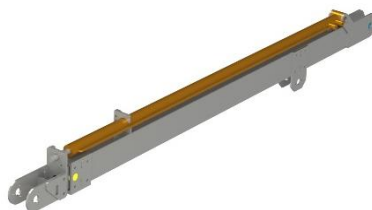
Turbine, 5.5 kW

Turbine (380V) used for 25-50 meters distance



Short Arm

Short arm used to take samples from small vehicles Lengths: Min. 2300 mm / Max. 3800 mm



Long Arm

Long arm used to take samples from small vehicles Lengths: Min. 3200 mm / Max. 5000 mm



Double Piston Arm

Double piston arm used to take samples from large vehicles Lengths: Min. 2500 mm / Max. 5000 mm